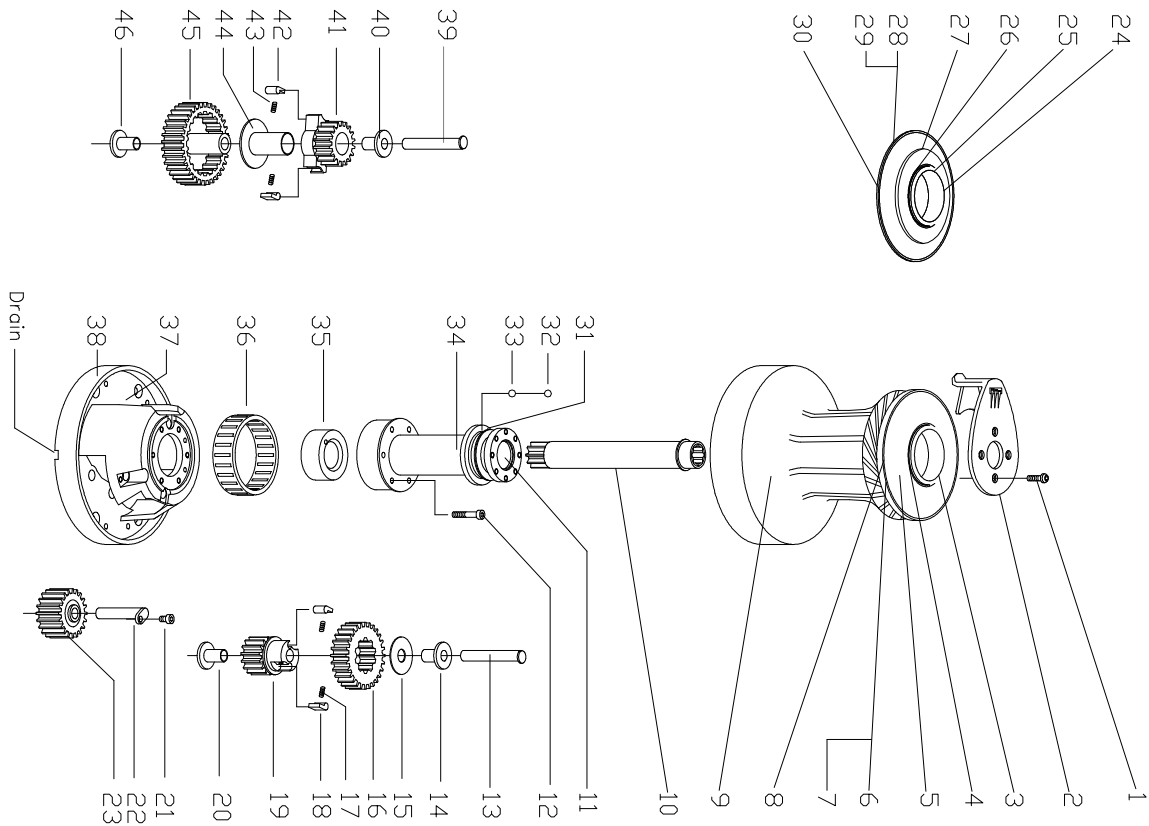


ANDERSEN Winch 52ST

VERSION 2.0



**SERVICE KIT 8
FOR WINCH 52ST
Part. No. 710008**

The service kit consists:

QTY.	DESCRIPTION	PART. NO.
1	Screw	ISO 7380-A4-M6X16
1	Screw	DIN6912-A4-M6X16
1	Screw	DIN912-A4-M6X8
1	Screw	583100
8	Spring	533500
4	Pawl	533400
2	Ball, Stainless steel	526301
2	Ball POM	566302
1	Retaining ring	526600
4	Bushing composite	525600
1	Circlip	590600U
1	Circlip	591000U
1	Circlip	590200

Please unfold the this page to see the Complete Part Lists and Exploded Views for the winches.

Note! Variations can occur due to changes of the winch specifications.

Manufactured by:

Fr. Andersens Maskinfabrik A/S

DK – 7100 Vejle Denmark

www.andersenwinches.com

E-mail: info@andersenwinches.com



52ST PARTS LIST

Version 2.1

POS.	QTY.	DESCRIPTION	PART. NO.
1.	4	Screw	ISO 7380-A4-M6x16
2.	1	Self-tailing arm	746400
3	1	Consol for self-tailing 8-16mm., standard	528811
4.	1	Circlip	591000U
5.	1	Disc spring, standard	526901
6.	1	Driving plate, standard 8-16mm.	540402
7.	6	Screw M6, standard	585100
8.	1	Self-tailing top 8-16mm. Cpl., standard	540408
9.	1	Drum complete 8-16mm, standard	734430
9.	1	Drum complete 8-16mm, full stainless	734420
10.	1	Drive shaft cpl.	526100
11.	1	Bushing	Not removable 716503
12.	6	Screw	DIN 912-A4-M6x35
13.	1	Shaft	526800
14.	1	Bushing	525600
15.	1	Washer	524300
16.	1	Ratchet gear	525200
17.	2	Spring	533500
18.	2	Pawl	533400
19.	1	Pawl gear	525102
20.	1	Bushing	525600
21.	1	Screw	DIN 912-A4-M6x8
22.	1	Shaft	583500
23.	1	Gear wheel cpl.	583404
24.	1	Consol for self-tailing 8-16mm., full stainless	528811
25.	1	O-ring	RD100431
26.	1	Circlip	591000U
27.	1	Top ring, full stainless	521305
28.	1	Self-tailing top 8-16mm. Cpl., full stainless	540410
29.	6	Screw M6, full stainless	585100
30.	1	Driving plate, full stainless 8-16mm.	540430
31.	1	Retaining ring	Not removable 526600
32.	11	Ball, stainless steel	526301
33.	12	Ball, POM	536302
34.	1	Upper base	742303
35.	1	Bushing	526201
36.	1	Roller bearing cpl.	525905
37.	1	Lower base	750200
38.	1	Base cover, standard	734300
38.	1	Base cover, full stainless	734320
39.	1	Shaft	526800
40.	1	Bushing	525600
41.	1	Pawl gear	525400
42.	2	Pawl	533400
43.	2	Spring	533500
44.	1	Bushing	525500
45.	1	Ratchet gear	525300
46.	1	Bushing	525600