

---

# Installation & Quick Start Guide

## WL50 Wireless Adaptor/Antenna

---



## 1. Introduction

Congratulations on the purchase of your WL50 Wireless Adaptor/Antenna. This unit is designed for quick and simple DIY installation in a touring, permanent or motor caravan (RV). The mounting brackets and suction pads are NOT designed for safe fixing of the antenna whilst a vehicle is moving and it is strongly recommended that your Wireless antenna is removed and placed inside the caravan when in motion.

**i** Before operating the unit you should familiarise yourself with the complete user manual supplied with the product.

## 2. Before you start

The WL50 comes complete with a CD-ROM that includes all necessary drivers for the following operating systems;

- Microsoft Windows XP®, Windows Vista® and Windows 7®
- Apple Mac OS X 10.3 and 10.4

**Note:** *Compatible drivers for the WL50 are also included with some LINUX distributions such as the latest version of Ubuntu. However, due to the wide variety of LINUX distributions available we cannot guarantee that the WL50 will work on all LINUX computers and suggest that users search for compatibility with the Zydas (ZD1211) or Atheros (AR5007UG) wireless chipsets that the WL50 uses.*

**i** Do not plug in the WL50 to the USB port of your computer until you have inserted the driver CD-ROM.

## 3. Mounting the WL50 Antenna

The WL50 should be mounted as high as possible and in line of sight with the wireless router that you wish to connect to. There are two methods of mounting the WL50 using the kit of parts included in the box;

- Sucker Cup Mount
- Pole Mount

**i** Neither of these two mounting methods should be used when the caravan is in motion.

### Sucker Cup Mounting

The most common mounting method is to use the four sucker cups to temporarily stick the WL50 to the side of the caravan. Insert and secure a sucker cup in each of the four holes in the aluminium tube clips, using the supplied clear plastic thumb nuts.

After first ensuring that the surface of the caravan where you wish to mount the WL50 is clean, lightly moisten each sucker cup and then gently push the antenna on to the caravan side until the sucker cups are flat.

This method of mounting is ideal for touring and motor caravans and the WL50 can stay mounted in this manner for many days – see photo.

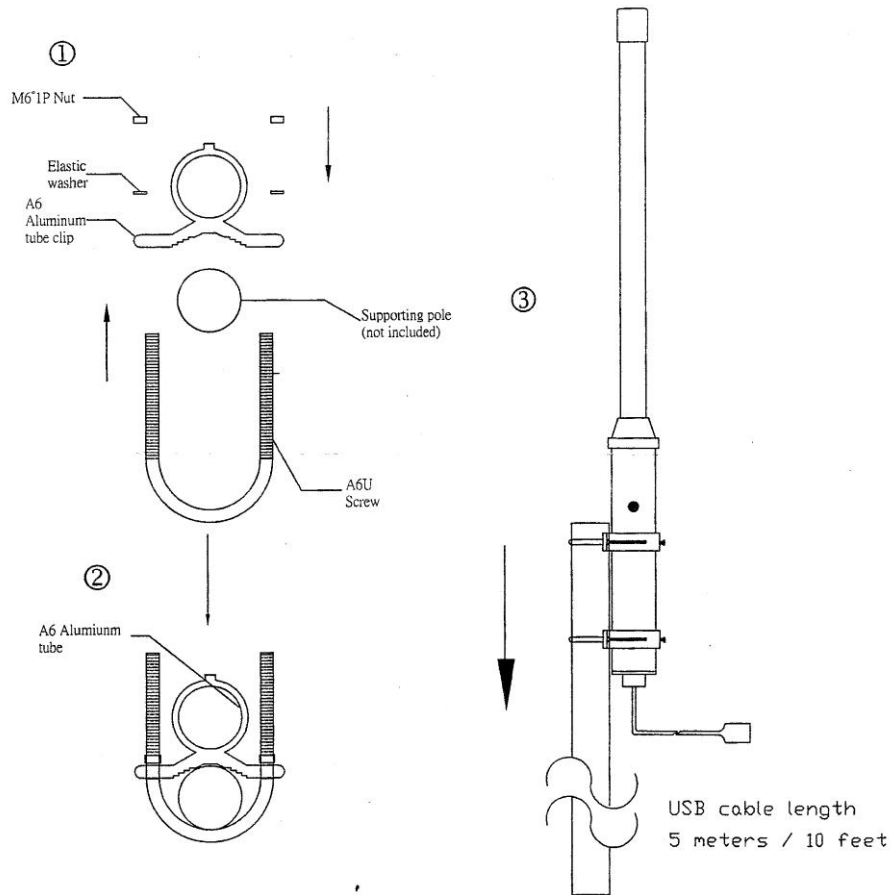
Removal is quick and simple by gently inserting a finger nail under each sucker cup and levering them off one by one.



## Pole Mounting

For a more permanent mounting arrangement or when you need to use a pole to get more height, it is possible to mount the WL50 using the U bolts, nuts and washers supplied.

The diagram below shows the three steps to mounting the WL50 on a suitable pole (up to 50mm in diameter). Please note that the mounting pole is not supplied.



### 3. Driver/Software Installation

It is very important that you do not plug the WL50 in to a USB port of your computer unless you the WL50 Drivers CD-ROM close to hand. By plugging in the WL50 you will initiate the Windows “Found New Hardware Wizard” which will not be able to complete correctly without the Driver CD-ROM being present. The installation process varies depending upon which Operating System your computer has, so please ensure that you follow the correct procedure.

#### Installation for Windows XP

Insert the WL50 Drivers CD-ROM in to your Windows PC. After the CD-ROM has been detected by Windows, plug in the WL50 in to a spare USB port.

After a few seconds, Windows should detect the WL50 and display the Found New Hardware Wizard (see Fig 1).

Windows is asking if you wish to search for the driver on-line using Windows Updater. Click on the “No, not at this time” option and then click the “Next” button.



Figure 1

Windows will now ask you if you want to install the software automatically (see Fig 2). Click on the “Install from a list or specific location (Advanced)” option and then click the “Next” button.

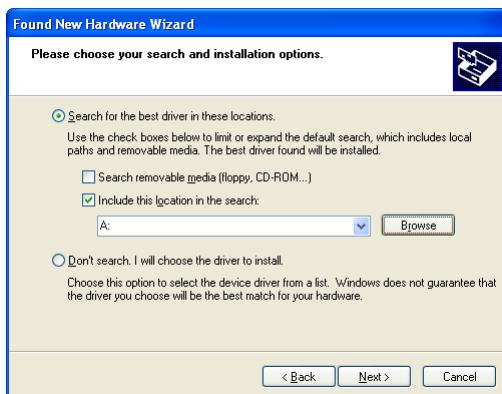


Figure 3

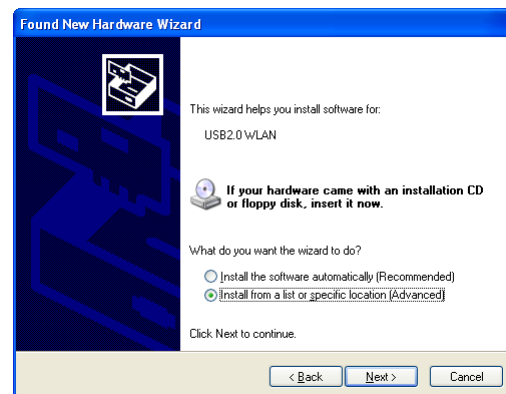


Figure 2

You will now be asked where you want to search for the software (see Fig 3). Click on the “Include this location in the search;” option and then click on the “Browse” button .

You will be presented with the normal Windows Browse window (see Fig 4). Scroll down the list of locations until you see the “My Computer” option, double click on this and you should see the CD-ROM location appear. Double click on this and then double click on the “Drivers” folder and then click on the “Windows\_XP” folder, at which point the “OK” button, which was greyed out should now be active. Click on the “OK” button.



Figure 4

You should now return to the same window as you were at before, but now the correct location for the Windows XP drivers should be in the white entry box to the left of the “Browse” button (see Fig 5). Click the “Next” button

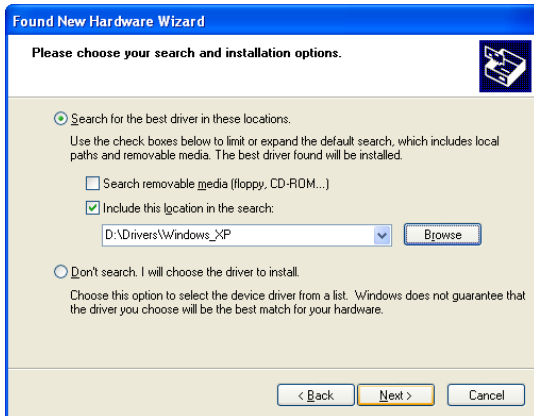


Figure 6

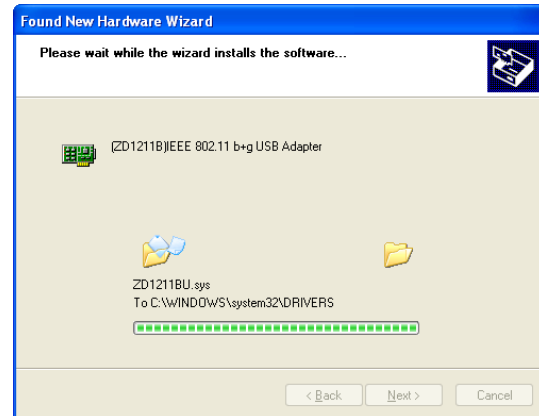


Figure 5

Windows should now start to install the driver and you will see the window shown in Fig 6. This takes a few moments to complete but when finished you will see the window in Fig 7.

This indicates that everything has installed correctly and your WL50 is now ready to be used.

Click the “Finish” button to close the “Found New Hardware Wizard” and return to normal Windows operation.

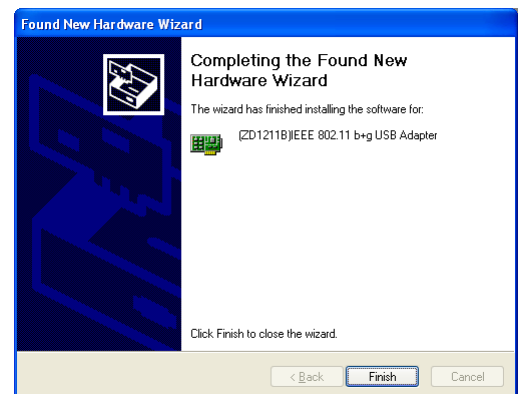


Figure 7

If your laptop has a built-in, normal wireless adaptor, then you should turn it off whenever the WL50 is plugged in. Consult your laptop instruction manual to find out how to do this. Following this procedure whenever the WL50 is plugged in, will ensure that you connect via the WL50 to get the best signal range possible.

The WL50 should now appear as one of the Wireless Network Adaptors available on your PC. On the taskbar, right click on the wireless network icon and select the option “View Available Wireless Networks”. Select the Wireless network that you wish to connect to and click the “Connect” button (see Fig 8).

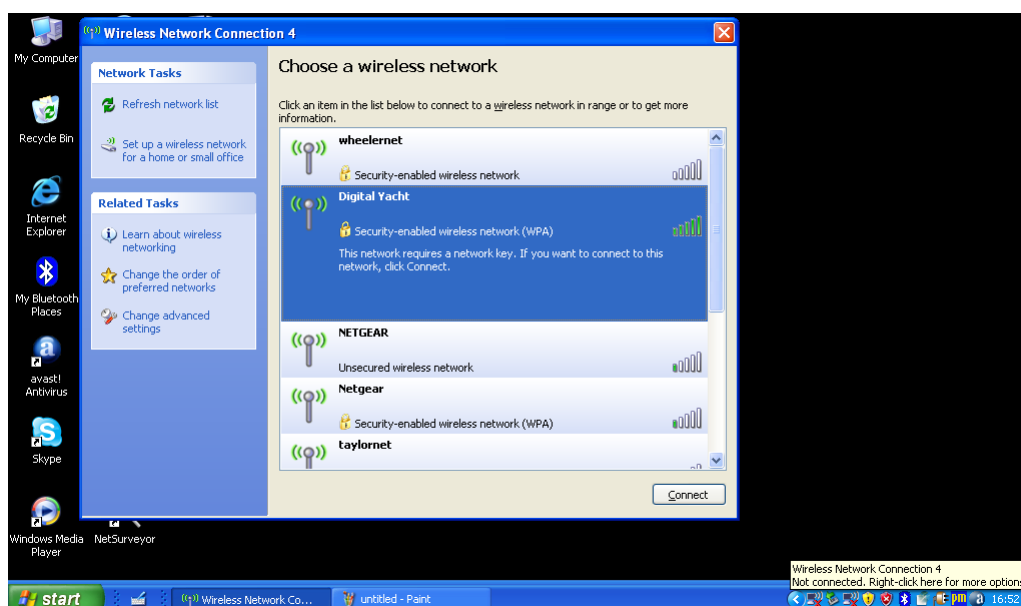


Figure 8

## Installation for Windows Vista and Windows 7

Insert the WL50 Drivers CD-ROM in to your Windows PC. After the CD-ROM has been detected by Windows, plug in the WL50 in to a spare USB port.

After a few seconds, Windows should detect the WL50 and either display the “Found New Hardware Wizard” as shown in Fig 9 or the small pop up window shown in Fig 10.

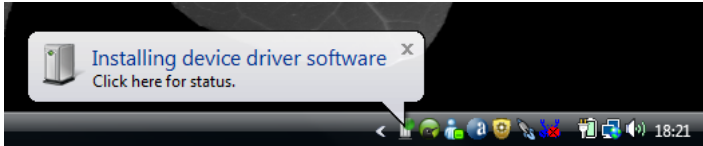


Figure 10

If you see the “Found New Hardware Wizard” window in Fig 9, click on the “Locate and install driver software (recommended)” option and Windows will start searching for the WL50 drivers.

After a short period (<30 seconds), you should either see the window in Fig 11 or the small pop up window shown in Fig 12.

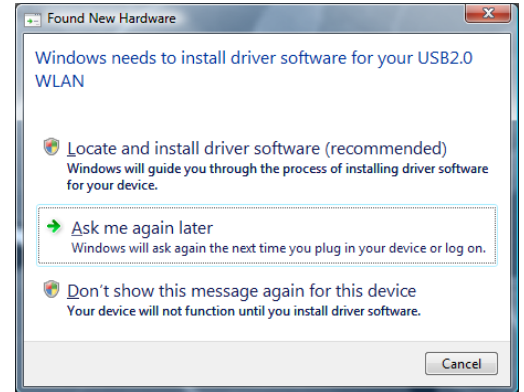


Figure 9

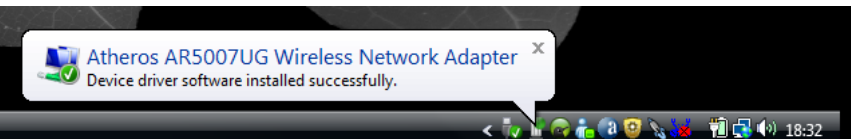


Figure 12

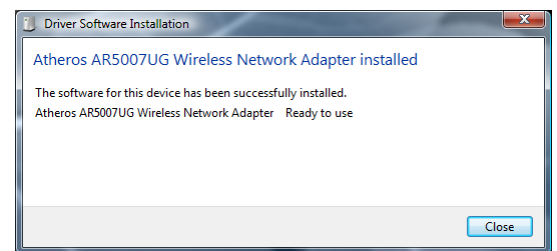


Figure 11

Your WL50 is now ready to use. If your laptop has a built-in, normal wireless adaptor, then you should turn it off whenever the WL50 is plugged in. Consult your laptop instruction manual to find out how to do this. Following this procedure whenever the WL50 is plugged in, will ensure that you connect via the WL50 to get the best signal range possible.

The WL50 should now appear in Windows Vista as one of the Wireless Network Adaptors available on your PC. On the taskbar, right click on the wireless network icon and select the option “Connect to a Network”. Select the Wireless network that you wish to connect to and click the “Connect” button (see Fig 13).

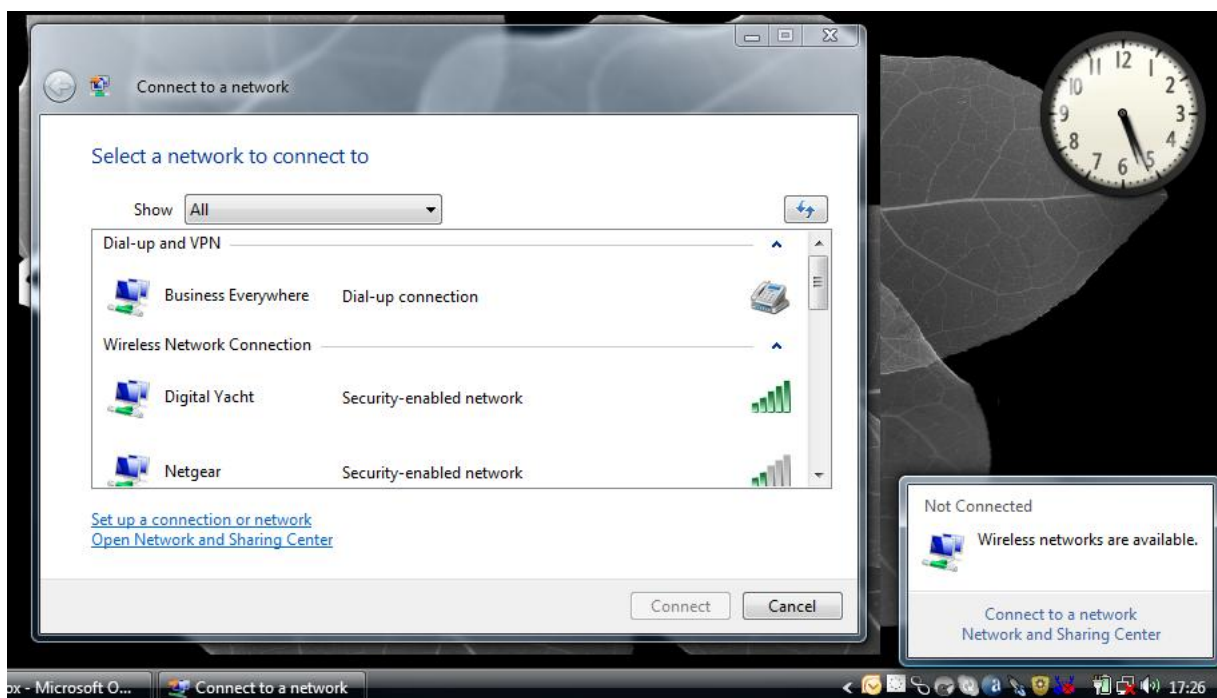


Figure 13

In Windows 7, the WL50 should also appear as one of the Wireless Network Adaptors available on your PC, but the presentation of the list of wireless networks is slightly different to that of Vista (see Fig 14). When you click on the wireless network icon in the taskbar, a pop up window of the available networks appears. You should click on the network you wish to connect to and then click on the “Connect” button that appears.

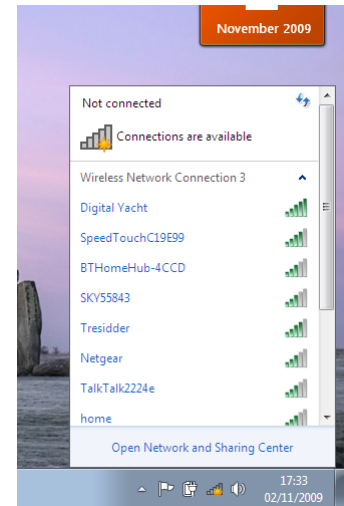


Figure 14

## Installation for Apple Mac OS X

Insert the WL50 Drivers/Software CD-ROM in to your Apple Mac and using Finder open the folder called MAC.

Included in this folder is a PDF file that explains how to install the driver software on a MAC. Follow the instructions in this PDF file. The procedure is identical for V10.3 and V10.4 (Intel) systems but you must select the correct installer included on the DMG file for the version you have on your Mac.

## Installation for LINUX

Due to the large number of different LINUX distributions, it is not possible to guarantee that the WL50 will work on all distributions. It has been tested on Ubuntu V8.04.2 (a Debian based distro) with Kernel V2.6.24 and all drivers were included in this distro.

If the drivers are included in your distro, simply insert the WL50 USB connector in to a spare USB port and LINUX will automatically load the correct driver and you will see the wireless networks that the WL50 can detect in the drop down wireless menu that appears when you click the wireless icon in the task bar.