

## Displays



Model	Dual Engine Display 4161	Dual Engine Display 4166	Display Computers 4141,4142,4144	Multifunction Display 3345
Display Pixel Matrix	1920x360	768x1024	1024x768 1920x1080 (FHD)	320 x 240
Display Size	19.25" Diagonal	10" Diagonal	10", 15", 22.5 Diagonal	4" Diagonal
Display Type	Colour TFT	Colour TFT	Colour TFT	Colour TFT
Brightness	1000 nits / 1000 cd/m2	1000 nits / 1000 cd/m2	1000 nits 1000 cd/m2	800 Nits (cd/m2)
Power Draw	30 W	30 W	30 - 50 W	4 LEN
Operating Voltage	24 VDC	24 VDC	12 ~ 32 VDC	10 ~ 32 VDC
Backlight	LED	LED	LED	LED
Mounting Type	Mounting brackets	Mounting brackets	Thumb nut mounted	Thumb nut mounted
Unit Size (mm)	513 W x 132 H x 53 D	199.5 W x 252 H x 52 D	4141 285 W x 235 H x 51.5 D 4142 380 W x 305 H x 51.5 D 4144 555.5 W x 305 H x 59 D	95 W x 95 H x 46 D
Network	NMEA2000® J1939	NMEA2000® J1939	NMEA2000®	NMEA2000®

## Tank Monitoring



Model	Hydrostatic Side Mount Tank Sender 4272(fuel) 4282(water)	Volumetric Fuel Sender 3271	Water Level Sender 3281	Sender Averaging Module 3271-SAM	Dual Deck Filler Gauge 3210	Tank Sender Adaptor 3125	4-20mA Tank Level Adaptor 4291	Resistive Gauge Driver 3135	Digital Tank Level Gauge 3350	Digital Tank Level Controller 3350	Deck Level Gauge 5250
Tank Type	Fuel/ Water	Fuel	Fresh Water	All	Fuel	Fuel/ Oil Fresh Water Waste Water Black Water	Fuel Fresh Water Grey Water Black Water	Fuel Fresh Water Grey Water Black Water	Fuel Fresh Water Grey Water Black Water	Fuel Grey Water Holding Tank	Fuel Fresh Water Grey Water
Max No. of Supported Tanks	16	16	16	6	2	16	16	16	16	16	16
Power Draw	LEN 1	LEN 1	LEN 1	LEN 1	LEN 3	LEN 1	LEN 2	LEN 3	LEN 3	LEN 3	LEN 1
Operating Voltage	9 ~ 32 VDC	9 ~ 16 VDC	9 ~ 16 VDC	9 ~ 32 VDC	9 ~ 16 VDC	9 ~ 32 VDC	12 ~ 24 VDC	9 ~ 16 VDC	9 ~ 30 VDC	9 ~ 30 VDC	9 ~ 30 VDC
Mounting Type	1/4" NPT, 1/4" BSP, M12 thread	SAE 5 bolt fitting 1.5" NPT 1.25" BSP threaded mount	1.25" BSP Thread or SAE standard 5 bolt with adaptor	Screw mounted	Screw mounted	In cable harness	Screw mounted	In cable harness	Standard 52mm / 2" hole in panel 1-25mm thick	Standard 52mm / 2" hole in panel 1-25mm thick	60mm hole in panel screw / bolt mounted
Unit Size (mm)	Ø35 x 86 D	Ø63 x 34 D	Ø63 x 19 D	98 W x 58 H x 17 D	90 W x 70 H x 22.5 D	87 W x 27 H x 16 D	98W x 58 H x 17 D	87 W x 27 H x 16 D	Ø68 x 60 D	Ø68 x 60 D	Ø82 x 11 D
Network	NMEA2000®	NMEA2000®	NMEA2000®	NMEA2000®	NMEA2000®	NMEA2000®	NMEA2000®	NMEA2000®	NMEA2000®	NMEA2000®	NMEA2000® or 0-10v Analogue

## AC Monitoring



Model	AC Monitor 3420	AC Current Transformer 3412
Voltage	0-300 VAC	
Phases	1-3	
Power Draw	LEN 1	
Operating Voltage	9 ~ 32 VDC	
Mounting type	Panel mounted	Cable tie
Unit size (mm)	6 W x 84 H x 35 D	
Network	NMEA2000®	

## DC Monitoring



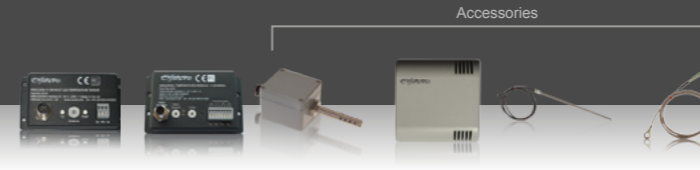
Model	DC Monitor 3410	DC Current Transformer 3412	500 Amp DC Shunt 3415	1200 Amp DC Shunt 3416
Voltage	9-40VDC			
Current	0-1200 Amps	200 Amps	500 Amps	1200 Amps
Power Draw	LEN 1			
Operating Voltage	9 ~ 32 VDC			
Mounting Type	Panel mounted	In cable harness	Screw mounted	Screw mounted
Unit size (mm)	96 W x 84 H x 35 D	87 W x 27 H x 16 D	82 W x 43 H x 44 D	114 W x 54 H x 63 D
Network	NMEA2000®			

## Modbus



Model	Modbus Gateway 3155
Adapts	Modbus to NMEA2000
Power Draw	LEN 1
Operating Voltage	9 ~ 32 VDC
Mounting Type	DIN rail
Unit size (mm)	120 H x 100 W x 34 D
Network	NMEA2000®

## Temperature Monitoring



Model	Exhaust Gas Temperature Module 4510	4 Channel Temperature Module 4521	Cabin Temperature Probe 4522	Cabin Temperature Probe 4522	Liquid Temperature Probe 4523	Ring Bolt Temperature Probe Type K 4524
Temperature	0-350°C	0-100°C	0-100°C	0-100°C	0-100°C	0-100°C
Channels	1	4				
Power Draw	LEN 1	LEN 2				
Operating Voltage	9 ~ 32 VDC	9 ~ 32 VDC				
Mounting Type	Panel mounted	Panel mounted	Screw mounted	Screw mounted	Hole mounted	Bolt mounted
Unit size (mm)	513 W x 131.8 H x 53.1 D	120 H x 100 W x 35 D	80 H x 74 W x 54 D	80 H x 80 W x 24.5 D	Ø6 x 150 long	Ø10 x 4000 long
Network	NMEA2000®	NMEA2000®				

## Adaptors



Model	NMEA2000® 4-20mA Pressure Adaptor 4601	J1939 Adaptor 3185	16 Channel Switch Input Module 4410	Trim Tab Adaptor 5801
Adapts	Pressure	J1939	Switch inputs	Up to 3x Bennett Trim Tabs
Channels	1	1	16	16
Power Draw	LEN 2	LEN 3	LEN 1	LEN 1
Operating Voltage	9 ~ 32 VDC	12 ~ 32 VDC	9 ~ 32 VDC	9 ~ 32 VDC
Mounting Type	Screw mounted	Screw mounted	Screw mounted	Screw mounted
Unit size (mm)	513 W x 132 H x 53 D	80 H x 74 W x 54 D	125 H x 78 W x 38 D	120 H x 135 W x 35D
Network	NMEA2000®	NMEA2000®	NMEA2000®	NMEA2000®