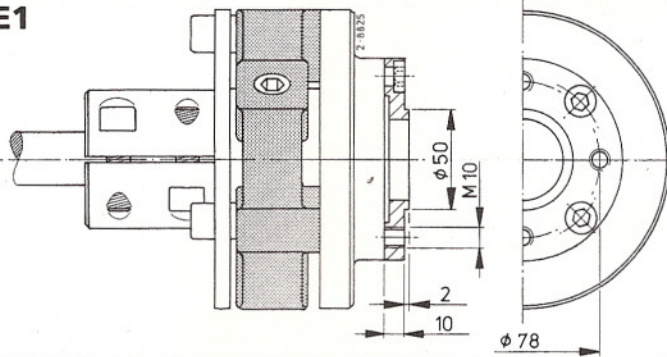


VETUS[®] FLEXIBLE KUPPLUNGEN

(ohne Anwendung eines Staudrucklagers)

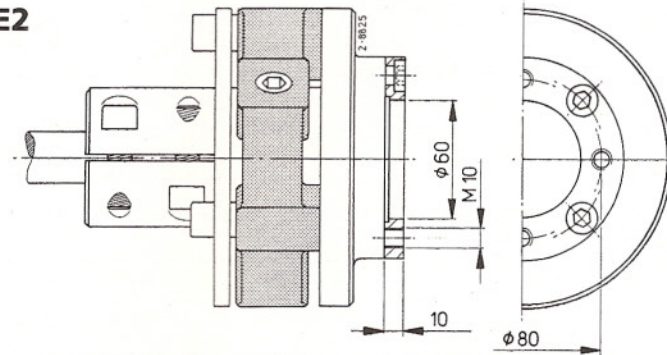
SEPARAT LIEFERBARE ZWISCHENFLANSCHEN

FLANGE1



KANZAKI KC30
KC100
YANMAR 1GM10
2GM20
3GM30
3HM

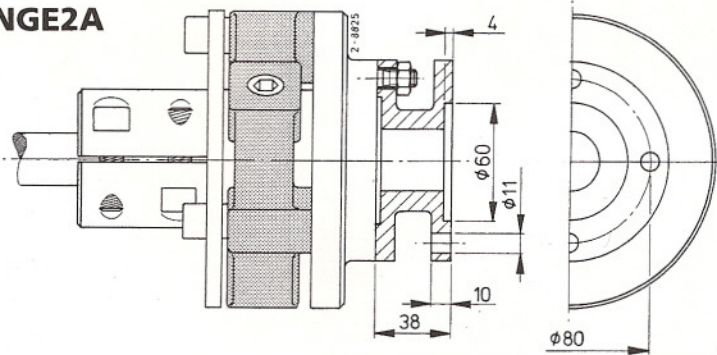
FLANGE2



VOLVO MS2L
MS2B "in line"

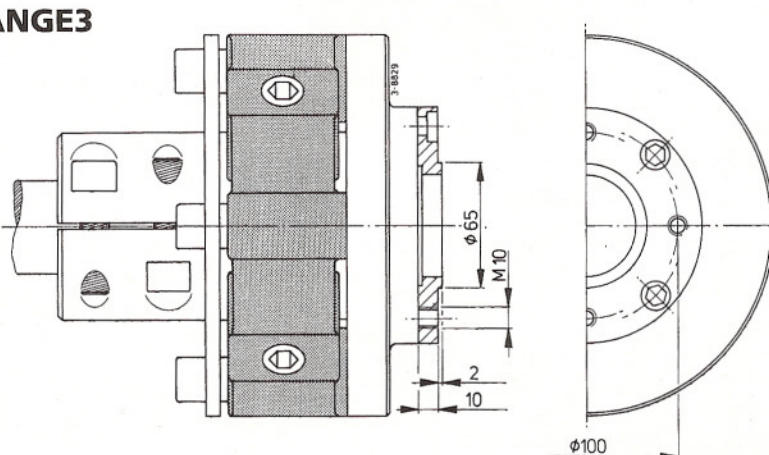
Gewindelöcher des Wendegetriebes auf
Ø 10,5 mm aufbohren

FLANGE2A



VOLVO MS2A
MS2B "down angle"

FLANGE3



KANZAKI KC180
YANMAR 4JH-TE

nur für Bullflex 8