

i70 Instrument display

Quick reference

ENGLISH

Document number: 86141-1

Date: 11-2010

The Raymarine logo is positioned in the bottom left corner of the page. It features the brand name 'Raymarine' in a bold, black, sans-serif font, followed by a registered trademark symbol (®). The logo is set against a light gray background that is part of a larger graphic element consisting of several overlapping, curved bands in shades of gray and black that sweep across the bottom of the page.

Raymarine®

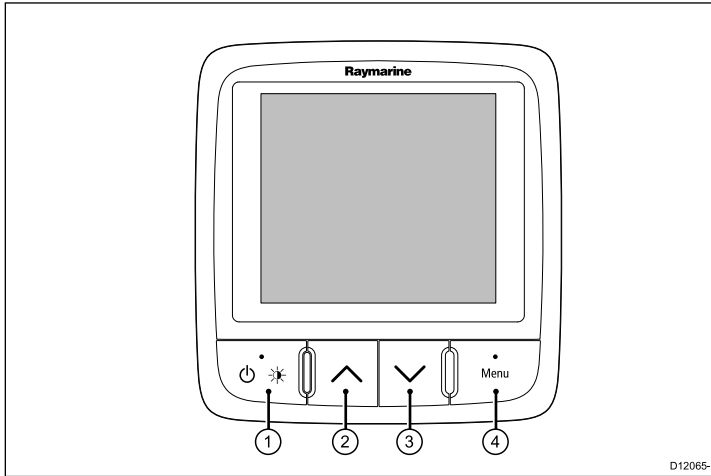
ENGLISH

Document number: 86141-1

Date: 02-2011

Instrument controls

Control layout and functions.



D12065-1

Item	Description
1.	LEFT SOFT BUTTON Power, brightness, cancel, back
2.	UP ARROW Up navigation, Adjust Up
3.	DOWN ARROW Down navigation, Adjust Down
4.	RIGHT SOFT BUTTON Menu, select, OK, Save

Powering the instrument on

1. Press and hold the **LEFT SOFT** button for 1 second, until the Raymarine logo appears.
The instrument will load to favorites page one.

Powering the display off

1. From any favorite page press and hold the **LEFT SOFT** button. After 1 second a power down pop up will appear.
2. Continue to hold the **LEFT SOFT** button for a further 3 seconds to complete the power off

Adjusting the displays brightness

To adjust the brightness of the individual display:

1. Whilst in a favorite page momentarily press the **LEFT SOFT** button.
This will open the brightness setting screen.
2. Use the **UP** and **DOWN** buttons to change the brightness percentage to the required level.
3. Press the **RIGHT SOFT** button to confirm new brightness and go back to the favorites page you were on.

Simulator

The Simulator mode enables you to practice operating your display without live data from a transducer or other connected peripherals.

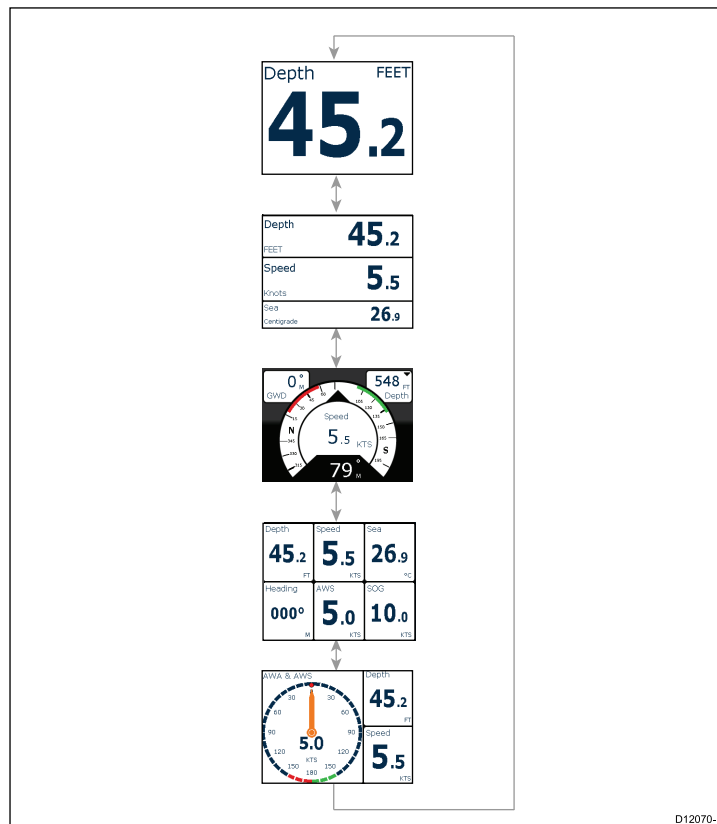
The simulator mode is switched on/off in the **Simulator** option from the **Setup Menu**.

Note: Raymarine recommends that you do NOT use the simulator mode whilst navigating.

Note: The simulator will NOT display any real data, including any safety messages (such as those received from AIS units).

Note: Any system settings made whilst in Simulator mode are not transmitted via SeaTalk to other equipment.

Favorite pages



The i70 presents instrument data on a series of pages. You can have a minimum of 1 and a maximum of 10 favorite pages available. There are sixteen different page layouts to choose from which can be customized with different data types.

There are also a number of be-spoke pages you can choose from.

Selecting pages

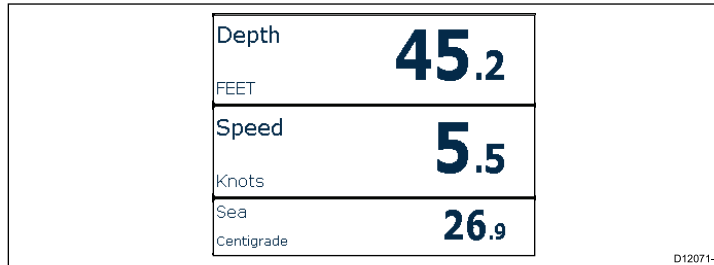
1. Use the **UP / DOWN** arrows to select between the available pages.

Alternatively use the Rollover feature within the setup menu to cycle through the pages automatically.

Favorite page frames

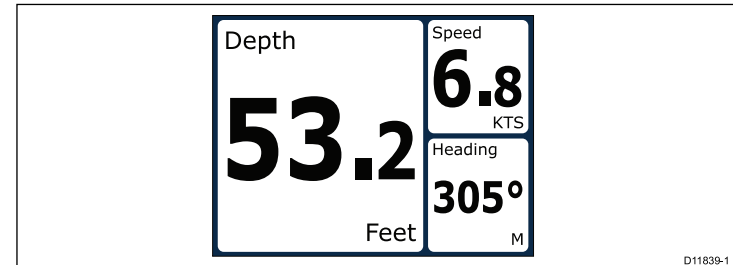
Each piece of information is displayed in a frame within the page. The frames support a number of different styles and formats for presenting the data.

Tri data frame



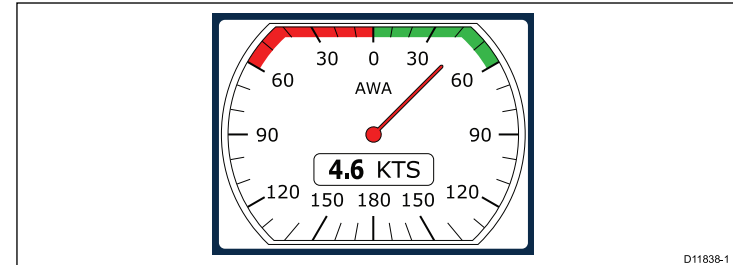
The tri data frame enables digital data to be displayed in numerical format.

Digital frames



The digital frames provides data in a numerical format.

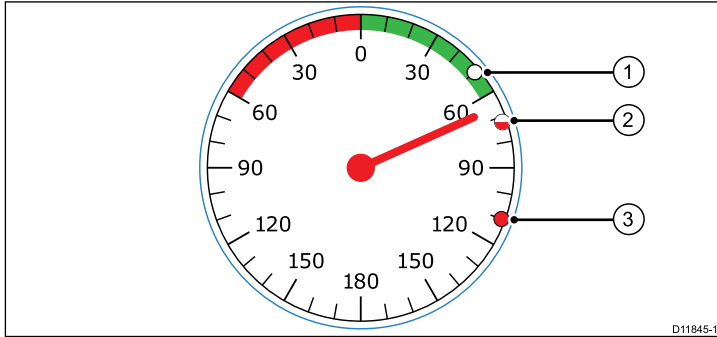
Analog frames



Analog frames provide real-time data in the form of an analog gauge. Analog gauges are only available for full and 2/3 screen frames.

Maximum and minimum indicators

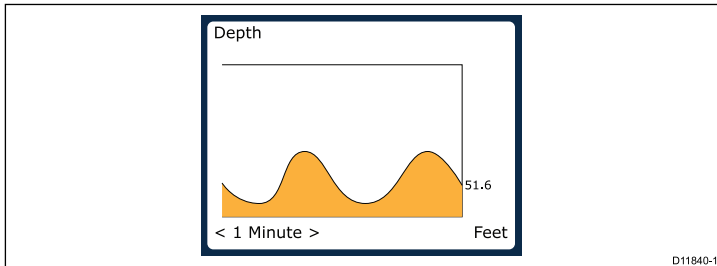
Maximum, minimum and average value indicators are displayed on analog speed, wind speed and wind angle screens.



D11845-1

1	Minimum value
2	Average value
3	Maximum value indicator

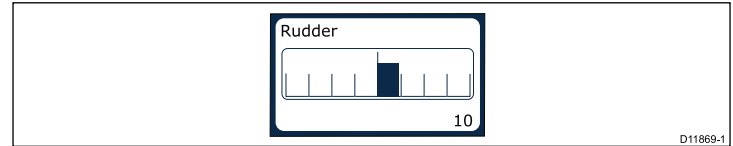
Graph frames



D11840-1

Graphs provide a means of showing how a particular reading has changed over time.

Bar graph frames



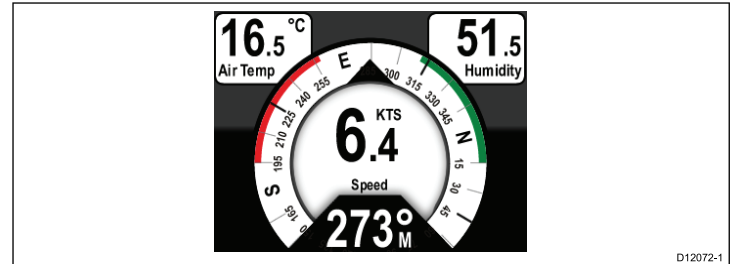
D11869-1

The rudder bar is an example of a bar graph frame.

Multi gauge frames

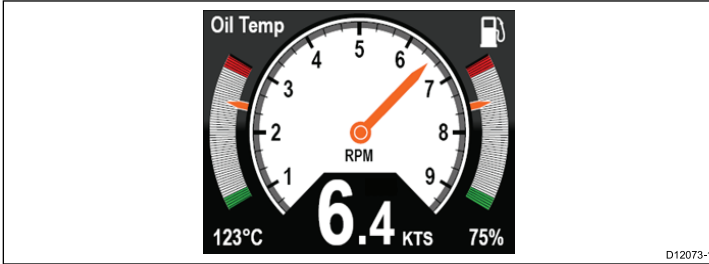
The i70 provides three multi-gauge frames for use as favorite pages which you can see below:

Multi-gauge — sailing vessel

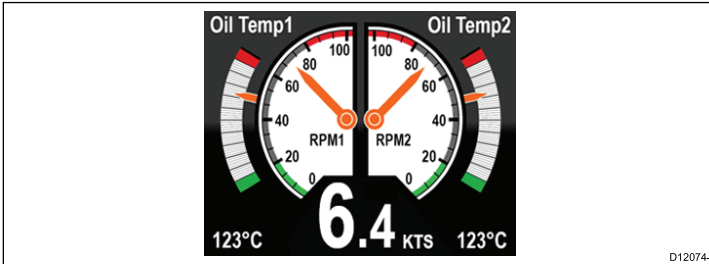


D12072-1

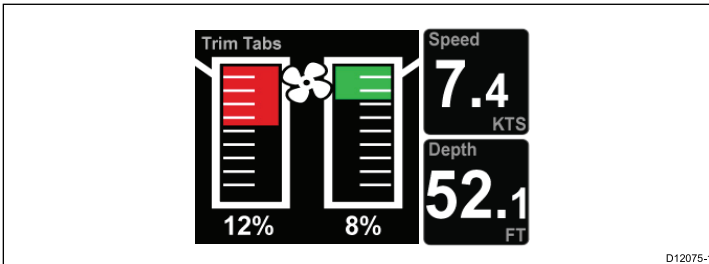
Multi-gauge — single engine vessel



Multi gauge — twin engine vessel

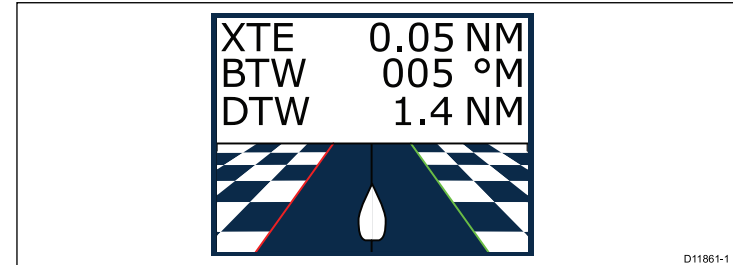


Trim tab frame



The trim tab frame provides information on the position of the trim tabs.

Rolling road frame



The rolling road provides waypoint and course deviation information.

Adding a page

You can add up to a maximum of 10 pages in your favorites.

1. With an instrument page displayed on the screen press the **RIGHT SOFT** button to open the main menu.
2. Select **Favorites page** from the menu.
3. Select **New page** from the menu.

If you already have the maximum number of pages set up you will not be allowed to add another page without deleting an existing page first. Otherwise you will be taken to a page layout option screen.

4. Highlight and select the required page layout and press **SELECT**.
5. You can now select the required data to be displayed in your new page by following the Editing an existing page procedure.

AIS

AIS Overview

The AIS feature enables you to receive information broadcast by other vessels, and to view these vessels as targets relative to your boat. The AIS feature on i70 is standalone, settings and alarms cannot be shared with other AIS enabled products on your system.

How AIS Works

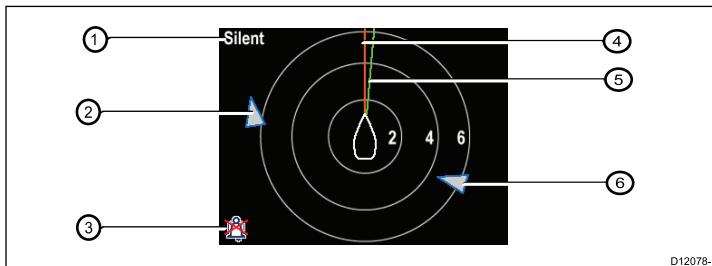
AIS uses digital radio signals to broadcast 'real-time' information between vessels and shore-based stations via dedicated VHF radio frequencies. This information is used to identify and track vessels in the surrounding area and to provide fast, automatic and accurate collision avoidance data.

Note: It may not be mandatory for vessels to be fitted with operational AIS equipment. Therefore, you should not assume that your multifunction display will show ALL vessels in your area. Due prudence and judgement should be exercised.

With an optional AIS unit connected to your system you can:

- Display targets for any other AIS—equipped vessels.
- Display voyage information being broadcast by these targets, such as their position, course, speed and rate-of-turn.
- Display basic or detailed information for each target vessel, including safety-critical target data.
- Set up a safe zone around your vessel.
- View AIS alarm and safety-related messages.

AIS information is displayed on the screen as shown below:



Item	Description
1,	AIS text See AIS messages in table below
2	Unknown vessel
3	Alarms off icon
4	Heading line
5	COG line
6	Unknown vessel

Note: Where unstable or no heading or COG data is available AIS targets will not be shown and the centre vessel icon will not be displayed.

AIS Messages

AIS messages are displayed on the top left of the AIS screen, with icons displayed on bottom left.

AIS Messages	Description
AIS off	AIS Unit off
(none)	AIS is on and transmitting

AIS Messages	Description
Alarm on icon	AIS on, transmitting, alarm is active.
Silent	AIS on & user is silent to other vessels.
Alarm on	AIS on, user is silent to other vessels & alarm is active.
Alarm off icon	AIS on & Alarm off
Data lost	AIS on & data lost.
No fix	AIS on & lost GPS fix.
Insufficient COG/Hdg data	No stable COG or heading data

AIS-equipped vessels in the surrounding area are displayed on the page as targets. A maximum of 25 targets can be displayed, where more than 25 targets are in range a **Max targets** is displayed on screen. As the vessel's status changes, the symbol for the target changes accordingly.

Viewing AIS target information

Whilst on the AIS page you can view information about AIS targets by following the steps below:

1. Press the **RIGHT SOFT** button to bring up the **Quick options** and then select **AIS Target info**.
2. Use the **UP** and **DOWN** buttons to select an AIS target on the screen.

The Name of the vessel will be displayed in the page header.

3. Press **INFO** to bring up detailed information about the selected target
 - Vessel name
 - MMSI number
 - Vessel type

- Call sign
- SOG

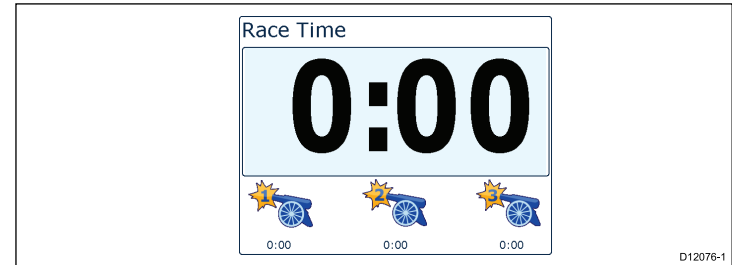
Information displayed is dependant upon the type of target selected.

4. You can use the **UP** and **DOWN** buttons to scroll through the data if required.
5. To return to the AIS page press the **BACK** .

Race timer settings

Setting the race timer

If the race timer has not been setup as a favorite page then the timer can be accessed from the view data menu: **Menu > View data > Time > Race timer** .



1. To add the race timer as a favourite page from the **View data** menu display the race timer and press the **RIGHT SOFT** button.
2. Select **Quick Options** and then select **Add to favourites**.
3. Once the race timer is a favorite page to use press the **RIGHT SOFT** button and then select **Quick options**.

The following options will be available:

- Start timer

- Stop timer
- Reset timer
- Adjust start times

4.

Using the race timer

Once the **Race timer** has been set you can use the timer by following the steps below:

1. When on the Race timer screen Press the **RIGHT SOFT** button and select **Quick options** from the menu
2. To adjust a timer setting select **Adjust start timer**.
 - i. Use the **UP** and **DOWN** buttons to select either timer 1,2, or 3.
 - ii. Use the **UP** and **DOWN** buttons to change the timer value to the required setting and press **SELECT** to confirm.
3. To start the timer select **Start timer** from the **Quick options** menu.
4. To pause the current running timer select **Stop Timer**.
5. To resume the timers count down select **RESUME** from the **Quick options** menu.
6. To reset the current timer select **Reset Timer**.
7. Once the timer reaches zero count up shall begin automatically.
8. To skip to the next timer press the **SKIP** key.
9. Whilst the timer is running you can view other favorite pages as normal.

Audible beeps shall be sounded at defined intervals to alert you to the timer status as follows:

- Double beep every minute.
- Beep Three times at the start of the last 30 seconds.
- Beep every second for the last 10 seconds.
- Beep for two seconds when the timer reaches zero

Alarms

Alarms are used to alert you to a situation or hazard requiring your attention.

Some examples of alarms are:

- Anchor alarm — Used when anchored, this alerts you to a change in depth which could mean that the chain length requires adjusting.
- Depth and speed alarms — These alarms alert you when your depth or speed moves outside of specified limits, for example a minimum depth.
- MOB (Man Overboard) alarm — Received from an MOB system.

When an alarm occurs, a message is displayed and an audible alarm may sound.



You can either:

- Silence the alarm, or
- Silence the alarm and edit the alarm settings.

Note: With the exception of alarm clock, speed and sea temp SeaTalk systems will only be able to switch alarms on/off, SeaTalk^{ng} systems will be able to adjust settings.

Raymarine[®]
A FLIR COMPANY

www.raymarine.com



www.busse-yachtshop.de | info@busse-yachtshop.de